

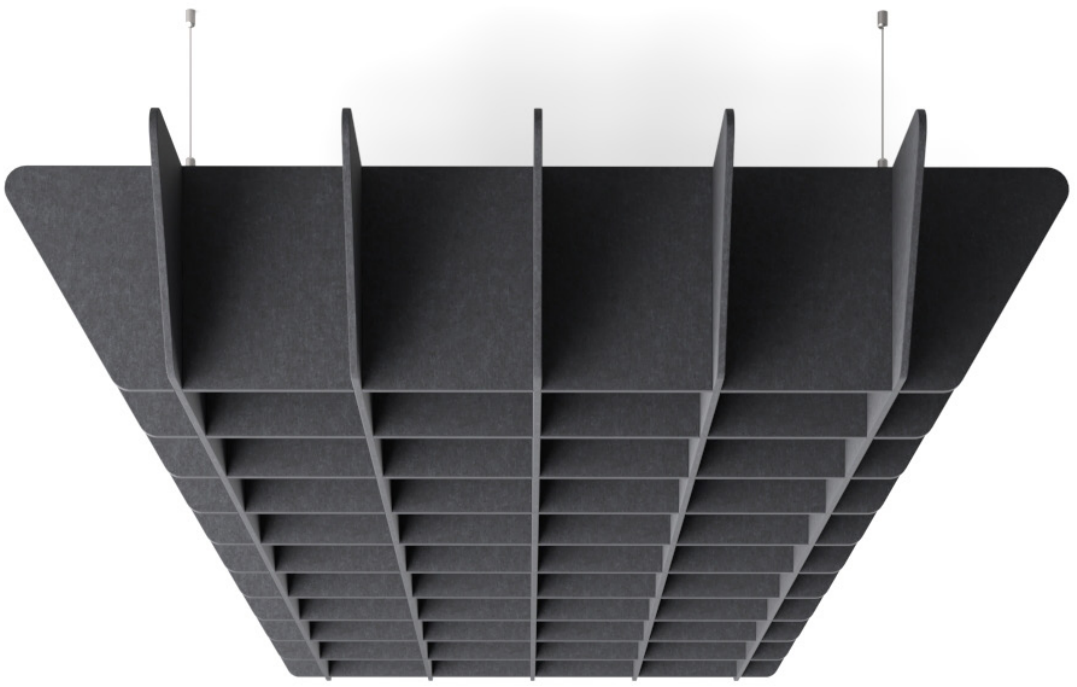
GRID CANOPY

TAPERED, RECTANGULAR,
CITE, KUPI & WAFFLE

EZO
B O R D



MEET GRID CANOPY

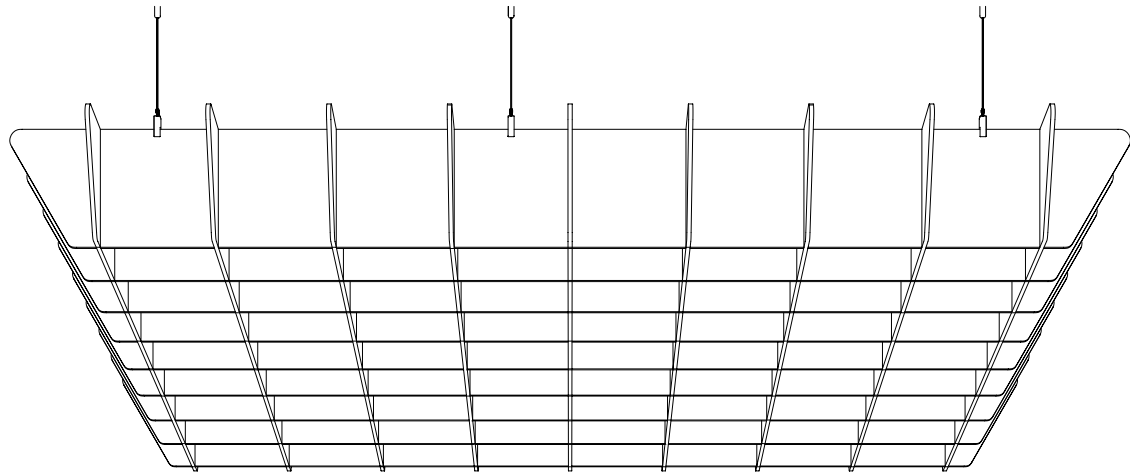


Suspended EzoBord Grid Canopies take room acoustics to an entirely new level. They control room reverberation using a new generation surface material that both absorbs noise and is fully customizable. Ceiling mounted for both sound absorption and aesthetic purposes, EzoBord Grid Canopies reduce echo and unwanted noise in boardrooms,

meeting areas, open plan offices and a variety of public spaces. Grid Canopies assemble in just a few minutes, are super light weight and easy to suspend from any ceiling with several suspension hardware options to choose from. They are available in both monotone and duotone color options. Made with recycled plastic water bottles.

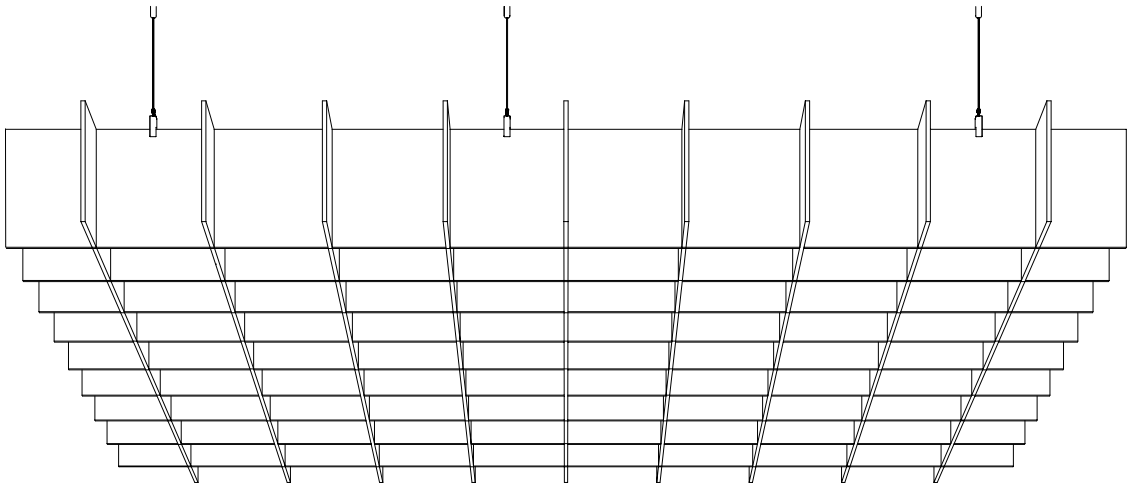
GRID CANOPY

TAPERED



LENGTH	WIDTH	HEIGHT
48" 1207mm	48" 1207mm	6" 140mm
48" 1207mm	48" 1207mm	10" 254mm
48" 1207mm	60" 1524mm	6" 140mm
48" 1207mm	60" 1524mm	10" 254mm
48" 1207mm	72" 1829mm	6" 140mm
48" 1207mm	72" 1829mm	10" 254mm
48" 1207mm	84" 2134mm	6" 140mm
48" 1207mm	84" 2134mm	10" 254mm
48" 1207mm	96" 2413mm	6" 140mm
48" 1207mm	96" 2413mm	10" 254mm
60" 1524mm	60" 1524mm	6" 140mm
60" 1524mm	60" 1524mm	10" 254mm
72" 1829mm	72" 1829mm	6" 140mm
72" 1829mm	72" 1829mm	10" 254mm
84" 2134mm	84" 2134mm	6" 140mm
84" 2134mm	84" 2134mm	10" 254mm

RECTANGULAR

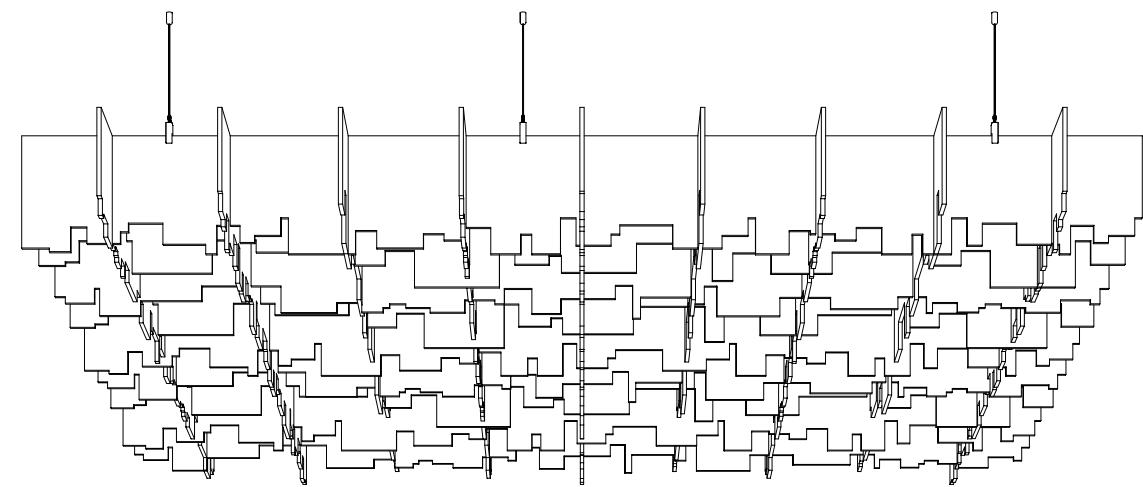


LENGTH	WIDTH	HEIGHT
48" 1207mm	48" 1207mm	6" 140mm
48" 1207mm	48" 1207mm	10" 254mm
48" 1207mm	60" 1524mm	6" 140mm
48" 1207mm	60" 1524mm	10" 254mm
48" 1207mm	72" 1829mm	6" 140mm
48" 1207mm	72" 1829mm	10" 254mm
48" 1207mm	84" 2134mm	6" 140mm
48" 1207mm	84" 2134mm	10" 254mm
48" 1207mm	96" 2413mm	6" 140mm
48" 1207mm	96" 2413mm	10" 254mm
60" 1524mm	60" 1524mm	6" 140mm
60" 1524mm	60" 1524mm	10" 254mm
72" 1829mm	72" 1829mm	6" 140mm
72" 1829mm	72" 1829mm	10" 254mm
84" 2134mm	84" 2134mm	6" 140mm
84" 2134mm	84" 2134mm	10" 254mm

When ordering, please also indicate grid density (8" or 12") and slab thickness (3/8" [9mm] or 1/2" [12mm]).
Please note that all dimensions are nominal, supplier reserves the right to adjust sizing without prior notification.

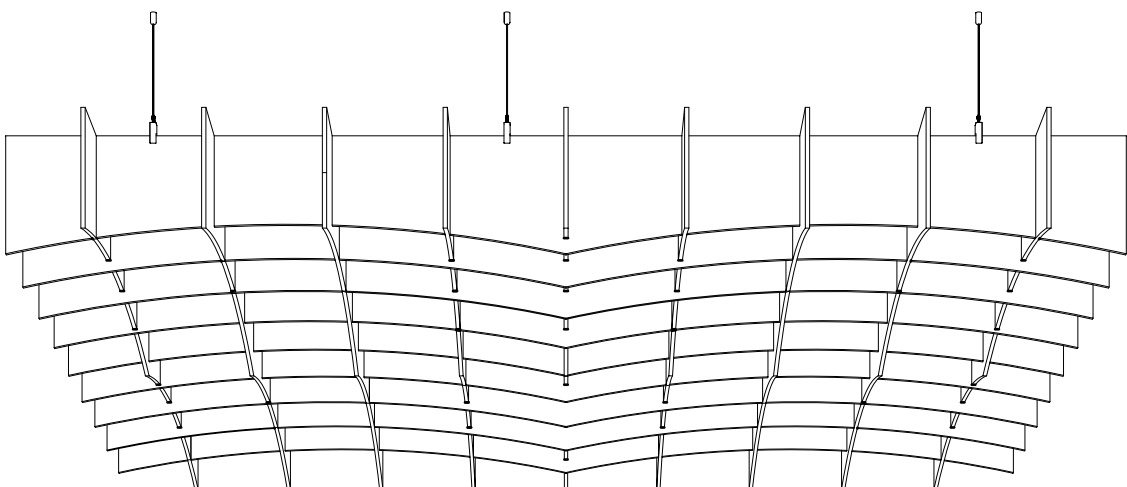
GRID CANOPY

CITE



LENGTH	WIDTH	HEIGHT
48" 1207mm	48" 1207mm	6" 140mm
48" 1207mm	48" 1207mm	10" 254mm
48" 1207mm	60" 1524mm	6" 140mm
48" 1207mm	60" 1524mm	10" 254mm
48" 1207mm	72" 1829mm	6" 140mm
48" 1207mm	72" 1829mm	10" 254mm
48" 1207mm	84" 2134mm	6" 140mm
48" 1207mm	84" 2134mm	10" 254mm
48" 1207mm	96" 2413mm	6" 140mm
48" 1207mm	96" 2413mm	10" 254mm
60" 1524mm	60" 1524mm	6" 140mm
60" 1524mm	60" 1524mm	10" 254mm
72" 1829mm	72" 1829mm	6" 140mm
72" 1829mm	72" 1829mm	10" 254mm
84" 2134mm	84" 2134mm	6" 140mm
84" 2134mm	84" 2134mm	10" 254mm

KUPI

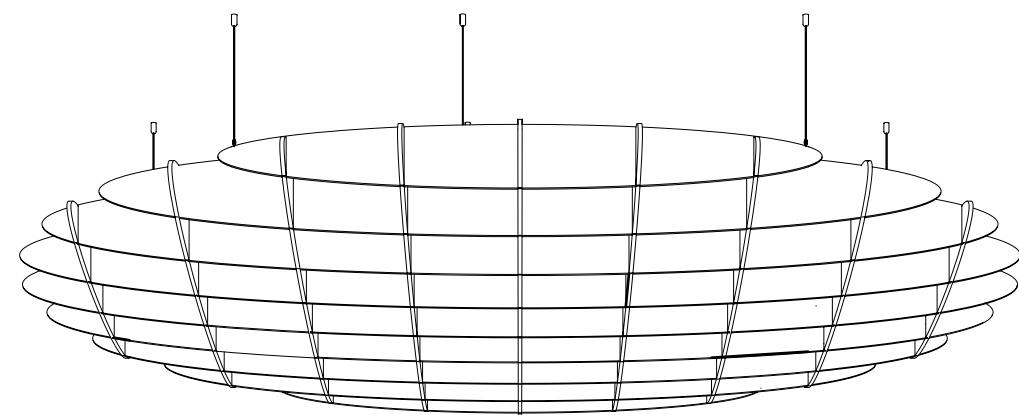


LENGTH	WIDTH	HEIGHT
48" 1207mm	48" 1207mm	6" 140mm
48" 1207mm	48" 1207mm	10" 254mm
48" 1207mm	60" 1524mm	6" 140mm
48" 1207mm	60" 1524mm	10" 254mm
48" 1207mm	72" 1829mm	6" 140mm
48" 1207mm	72" 1829mm	10" 254mm
48" 1207mm	84" 2134mm	6" 140mm
48" 1207mm	84" 2134mm	10" 254mm
48" 1207mm	96" 2413mm	6" 140mm
48" 1207mm	96" 2413mm	10" 254mm
60" 1524mm	60" 1524mm	6" 140mm
60" 1524mm	60" 1524mm	10" 254mm
72" 1829mm	72" 1829mm	6" 140mm
72" 1829mm	72" 1829mm	10" 254mm
84" 2134mm	84" 2134mm	6" 140mm
84" 2134mm	84" 2134mm	10" 254mm

When ordering, please also indicate grid density (8" or 12") and slab thickness (3/8" [9mm] or 1/2" [12mm]).
Please note that all dimensions are nominal, supplier reserves the right to adjust sizing without prior notification.

GRID CANOPY

WAFFLE



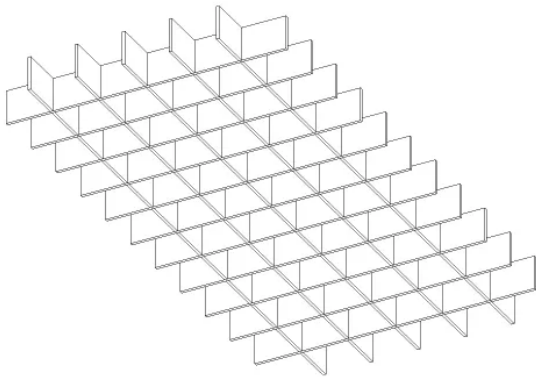
DIAMETER	HEIGHT
48" 1207mm	6" 140mm
48" 1207mm	10" 254mm
60" 1524mm	6" 140mm
60" 1524mm	10" 254mm
72" 1829mm	6" 140mm
72" 1829mm	10" 254mm
84" 2134mm	6" 140mm
84" 2134mm	10" 254mm
96" 2413mm	6" 140mm
96" 2413mm	10" 254mm

When ordering, please also indicate grid density (8" or 12") and slab thickness (3/8" [9mm] or 1/2" [12mm]).
Please note that all dimensions are nominal, supplier reserves the right to adjust sizing without prior notification.



SPECIFICATIONS

GRID CANOPY



COLOR

Each panel can be manufactured with different color

COMPOSITION

100% PET (min. %50 recycled content)

PRODUCT VARIANCES

Variation in fiber mix and colour may occur. All products will be supplied within commercial tolerances.

CLEANING

Remove dust and dirt with a stiff plastic bristle brush. Distilled water can be used to remove stains. Always use a soft, clean cloth and blot dry. Vacuuming works great as well.

FIRE TESTING

NORTH AMERICA:

- ASTM E-84 Class A*
- CAN ULC S102-10

EUROPE AND UK:

- EN13501-1: 2007

* Upon request, 1/2"(12mm) sheet material is treated with USA origin post-production flame retardant to Class A surface burning characteristics. Post sheet production FR treatment does not contain any Red List Restricted Chemicals and complies with California Proposition 65. Contact customer service for technical information, test data and safety data sheets for flame retardant

SIZES

5 standard models

LENGTHS **48"** 1207mm
60" 1524mm
72" 1829mm
84" 2134mm

WIDTHS **48"** 1207mm
60" 1524mm
72" 1829mm
84" 2134mm
96" 2413mm

THICKNESS **3/8"** 9mm | $\pm 0.5mm$
1/2" 12mm | $\pm 0.5mm$

DIGITAL PRINT

Custom graphics and textures can be printed on panels

ACOUSTICS

Refer to ASTM C423 test chart for specific absorption rates/frequency.

- 0.55 - 0.85 NRC**

Subject to mounting conditions, grid density, grid thickness and material thickness.

ENVIRONMENT

Made of polyester fiber, min. 50% of which comes from recycled water bottles which contributes to LEED MR Credit and BREEAM Health and Wellbeing, Materials points due to recycled content, acoustic performance, and low emitting materials. No VOC's: CDPH v1.2 and REACH SVHC Compliant.

USGBC LEED V4 CREDITS

While individual products do not 'earn' LEED credits, EzoBord can contribute to the following LEED v4 Credits. Please refer to the USGBC LEED credit guides for detailed requirements.

- EQc9 for enhancing acoustic performance
- MRC3 BPDO for sourcing of raw materials for recycled contribution
- EQc6 interior lighting for surface reflectance (lighter color options).



Customized by OMICRON AEC. Photographed by Upper Left Photography.

NOISE REDUCTION

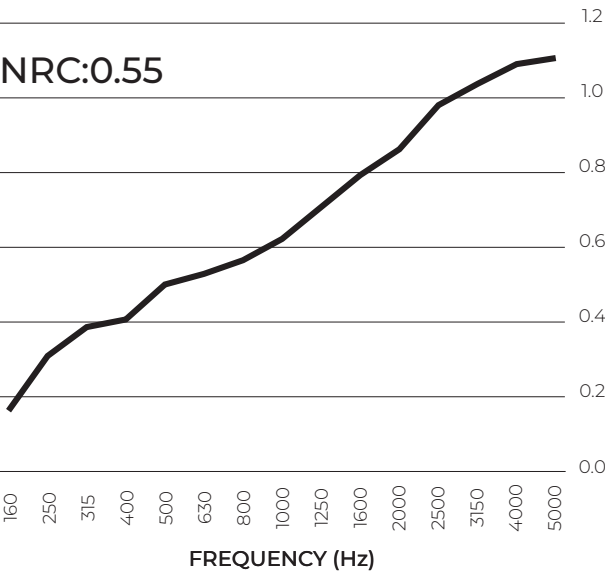
3/8" 9mm

Constructed from **3/8"** 9mm EzoBord
End Style Tapered
Grid Density **10 3/8"** 263.52mm
Grid Height **6"** 140mm

SOUND ABSORPTION COEFFICIENTS

ASTM C423-17

NRC	SAA	250	500	1000	2000	4000
0.55	0.57	0.30	0.49	0.62	0.85	1.07



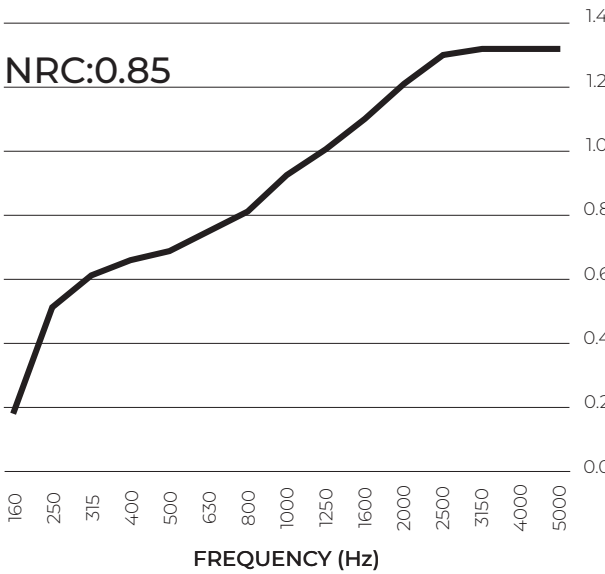
1/2" 12mm

Constructed from **1/2"** 12mm EzoBord
End Style Tapered
Grid Density **12 1/2"** 317.5mm
Grid Height **10"** 254mm

SOUND ABSORPTION COEFFICIENTS

ASTM C423-17

NRC	SAA	250	500	1000	2000	4000
0.85	0.84	0.54	0.69	0.94	1.22	1.37



ENVIRONMENT

Our Commitment to the Environment

There are approximately 50 billion water bottles consumed around the world each year, and only about half of those get recycled. The rest end up in landfills, littered through our neighborhoods, or floating in our oceans.

Bottled water consumption has more than doubled since 2000; in 2015 there was the equivalent of more than 5 bottles of water consumed for every person in the USA every single week. This, of course, means that the amount of oil required to produce the energy used for the water bottling process continues to grow.

In 2007, the last year global statistics of oil consumption were available, between 32 million and 54 million barrels of oil were used to produce the bottled water that was consumed in the USA alone. This energy is used to make the bottles from PET pellets (1 million tons in the USA), treat water, bottle the water, label the bottles, and transport the bottled water. Most of the energy consumption occurs in the creation of the bottles themselves. To help in the lifecycle of this plastic product, we have chosen to manufacture our material so that it recycles these PET bottles. We are doing our part to reduce the waste. This acoustical and tackable material is made from PET bottles in a zero-waste process with postindustrial recycling. An environmentally friendly, sustainable, and waste reduced alternative to traditional acoustical/tackable material that looks great in any office, education, or open space installation.

ezoBord is



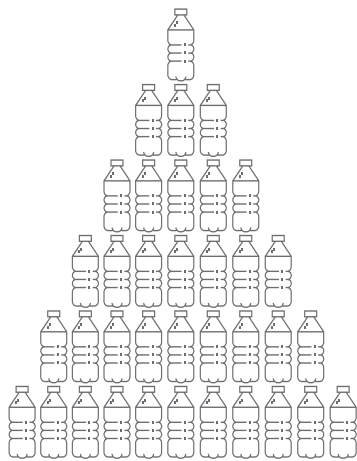
- low VOC
- formaldehyde free

DID YOU KNOW...



For every pound of recycled PET bottles (approximately 23) energy use is reduced by 84% and greenhouse gas emissions are reduced by 71%.

± 166 PET BOTTLES



are used to make one 9mm thick ezoBord sheet



CANADA

Ayrsonics Inc - Ontario

825 Trillium Drive
Kitchener, Ontario N2R 1J9
844-441-1122
sales@ayrsonics.com

Ayrsonics Inc - Alberta

292236 Nose Creek Boulevard
Building 1B, Unit #19
Rocky View County, AB T4A 3N7
844-441-1122
sales@ayrsonics.com

EzoBord Corporate Office

6845 Rexwood Road, Unit 7
Mississauga, ON L4V 1S5
416-665-3571
info@ezobord.com

UNITED STATES

Ayrsonics Midwest LLC

820 Tollgate Road
Elgin, IL 60123
800-517-0686
sales.amw@ayrsonicsusa.com

Ayrsonics Southwest LLC

13430 N Dysart Rd. Suite 120
Surprise, AZ 85379
213-833-9700
sales.asw@ayrsonicsusa.com

Ayrsonics Southeast LLC

15 Enterprise Way
Dahlonega, GA 30533
706-539-4711
sales.ase@ayrsonicsusa.com

UNITED KINGDOM

EzoBord UK Limited

Unit 20, Westwood Business Park
Margate, Kent. CT9 4JJ
+44 1843-264027
sales@ezobord.co.uk

IRELAND

EzoBord Ireland Limited

Inniscarra, Main Street,
Rathcoole, Co. Dublin,
D24 EO29, Ireland
+353 1485-4774
sales@ezobord.ie

CENTRAL & LATIN AMERICA

EzoBord Costa Rica SRL

100 Sur 25 Oeste Recope
Bodega #16 Ochomogo, Cartago
+506 8842-4613
info-ebcr@ezobord.com

EzoBord - LATAM

Buenos Aires, Argentina
+54 9 11 5657-1793
info-latam@ezobord.com