

MACARON

EZO
B O R D



MEET MACARON

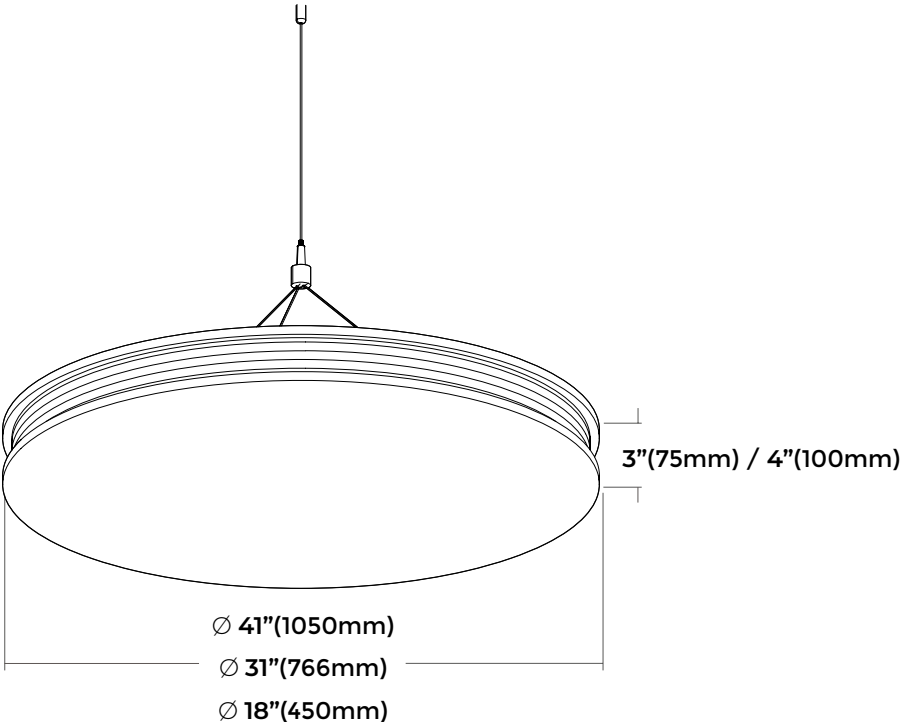
Macaron is EzoBord's take on a delicious visual treat! Layered with a color palette to enrich any environment, this dessert inspired office finish delivers both design elegance and acoustical performance. By integrating LED light fixtures, Macaron can be used to create any mood to support your brand. Macaron also integrates select EzoBord end pieces to further deliver on its sustainability story.

Macaron is your 'piece de resistance', mitigating sound reverberation while being malleable with an array of color combinations to create exciting and unique baffle variations.



SPECIFICATIONS

MACARON ACOUSTIC



COMPOSITION

100% PET (min. %50 recycled content)

DIMENSIONS

Available in 3 diameters, 2 thicknesses and 2 heights.

DIAMETER	HEIGHT 1	HEIGHT 2
Ø 41"(1050mm)	3"(75mm)	4"(100mm)
Ø 31"(766mm)	3"(75mm)	4"(100mm)
Ø 18"(450mm)	3"(75mm)	4"(100mm)

THICKNESS

Available in layers of EzoBord Material:

- 3/8" (9mm) ±0.5mm
- 1/2" (12mm) ±0.5mm

ACOUSTICS

NRC:

- 1.50 -Macaron Acoustic 3.00" (75mm)
- 1.55 -Macaron Acoustic 4.00" (100mm)

FIRE TESTING

NORTH AMERICA:

- ASTM E-84 Class A*
- CAN ULC S102-10

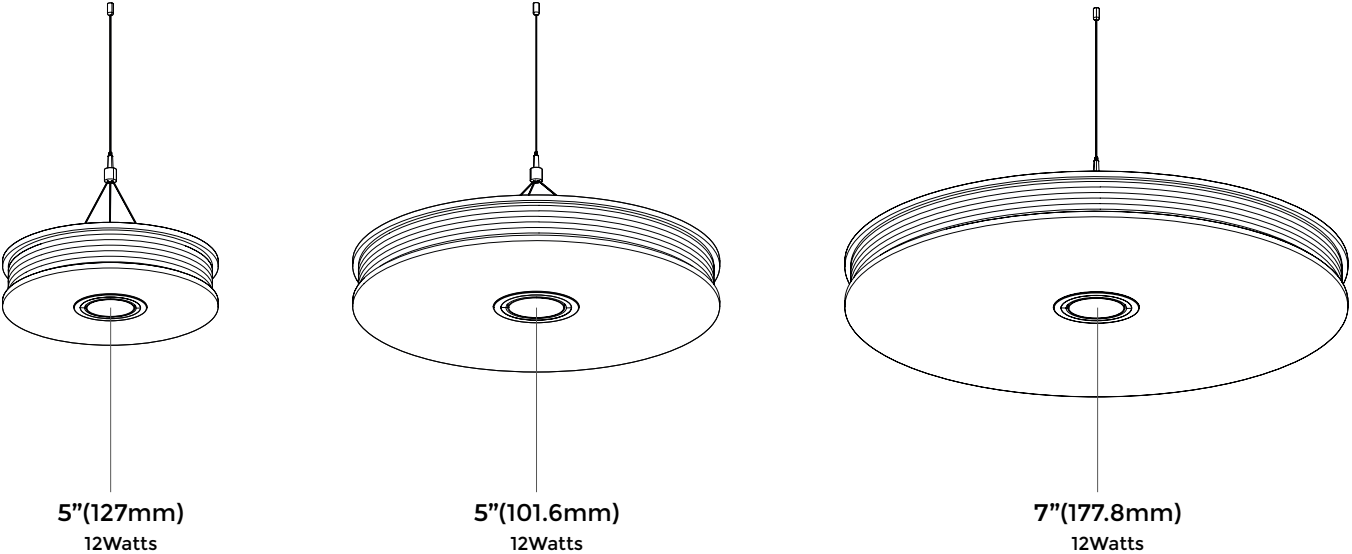
EUROPE AND UK:

- EN13501-1: 2007

* Upon request, 1/2"(12mm) sheet material is treated with USA origin post-production flame retardant to Class A surface burning characteristics. Post sheet production FR treatment does not contain any Red List Restricted Chemicals and complies with California Proposition 65. Contact customer service for technical information, test data and safety data sheets for flame retardant

MACARON LED

LED COMPONENT



COMPOSITION

100% PET (min. %50 recycled content)

DIMENSIONS

Available in 3 diameters, 2 thicknesses and 2 heights.

DIAMETER	HEIGHT 1	HEIGHT 2
Ø 41"(1050mm)	3"(75mm)	4"(100mm)
Ø 31"(766mm)	3"(75mm)	4"(100mm)
Ø 18"(450mm)	3"(75mm)	4"(100mm)

THICKNESS

Available in layers of EzoBord Material:

- 3/8" (9mm) ±0.5mm
- 1/2" (12mm) ±0.5mm

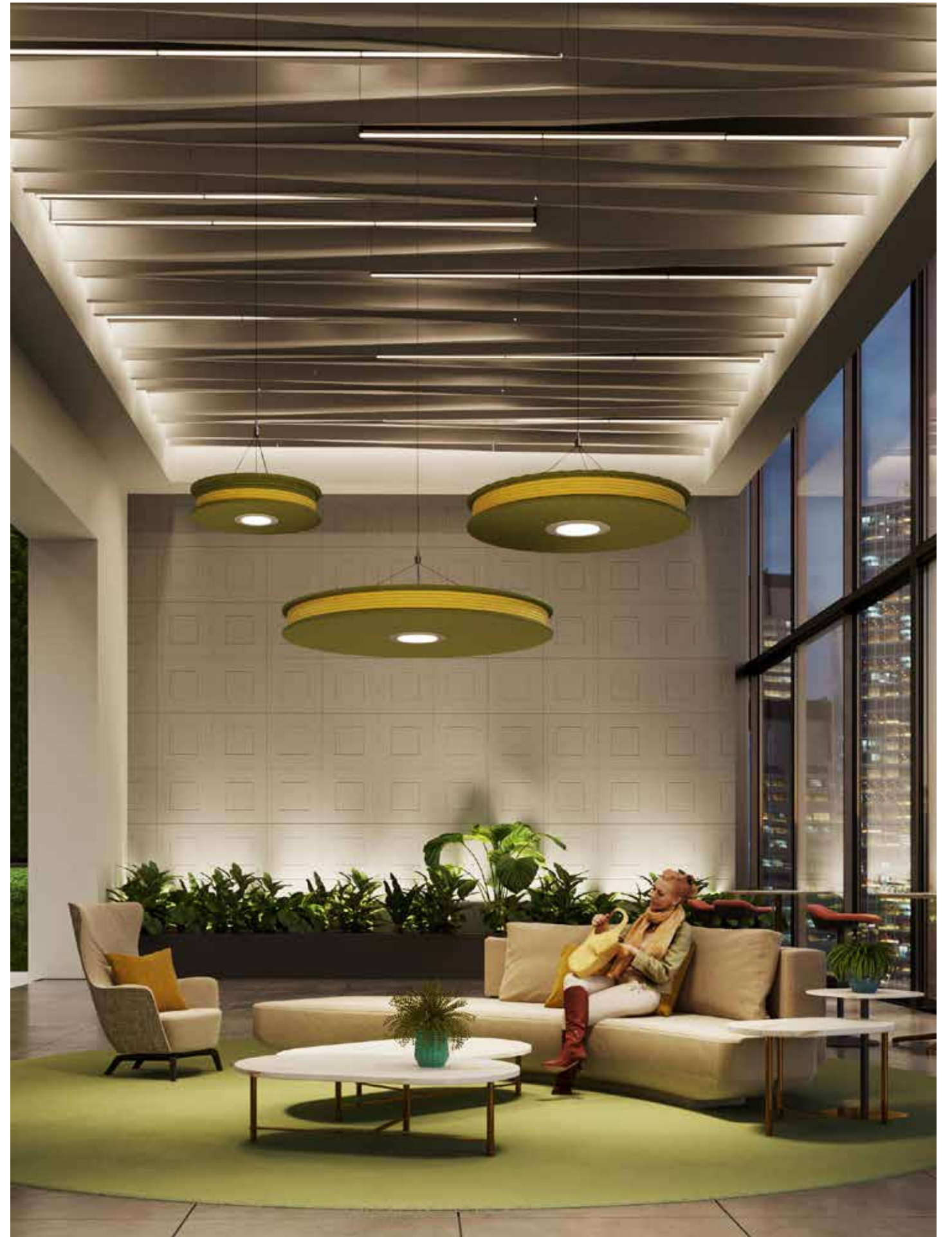
LED COMPONENT

MACARON Ø18" (450MM) AND Ø31" (766MM)

Integrated LED 12W - 700 Lumens CRI 80+
White, Brushed Nickel, Black Finish

MACARON Ø41" (1050MM):

Integrated LED 15W - 900 Lumens CRI 80
White, Brushed Nickel Finish



INSPIRATION

A few samples of limitless combinations.

Macaron Ø18" (450mm) Height 4.00" (100mm)

SUNSET	VOLCANO	MERLOT	MIDNIGHT	POLAR	RAINBOW
					
BG07 - BOLD GRAY DS18 - SUNNY DAYS	CV36 - GRAPE VINE DS18 - TREE BARK BR34 - BRICK RED	CV36 - GRAPE VINE PI14 - POLAR ICE CW04 - CLASSIC WHITE	SG14 - SILVER GRAY EG11 - ELEPHANT GRAY CG06 - CHARCOAL GRAY	RB08 - ROYAL BLUE OB14 - OCEAN BLUE PI14 - POLAR ICE	BR34 - BRICK RED TO24 - TIGER ORANGE DS18 - SUNNY DAYS MG10 - MOSS GREEN OB14 - OCEAN BLUE RB08 - ROYAL BLUE CV - GRAPE VINE

Macaron Ø31" (766mm) Height 3.00" (75mm)

					
EG11 - ELEPHANT GRAY DS18 - SUNNY DAYS	CV36 - GRAPE VINE DS18 - TREE BARK BR34 - BRICK RED	CV36 - GRAPE VINE PI14 - POLAR ICE CW04 - CLASSIC WHITE	SG14 - SILVER GRAY CG06 - CHARCOAL GRAY	RB08 - ROYAL BLUE PI14 - POLAR ICE	BR34 - BRICK RED TO24 - TIGER ORANGE DS18 - SUNNY DAYS MG10 - MOSS GREEN OB14 - OCEAN BLUE RB08 - ROYAL BLUE CV - GRAPE VINE

Ø41" (1050mm) Height 3.00" (75mm)

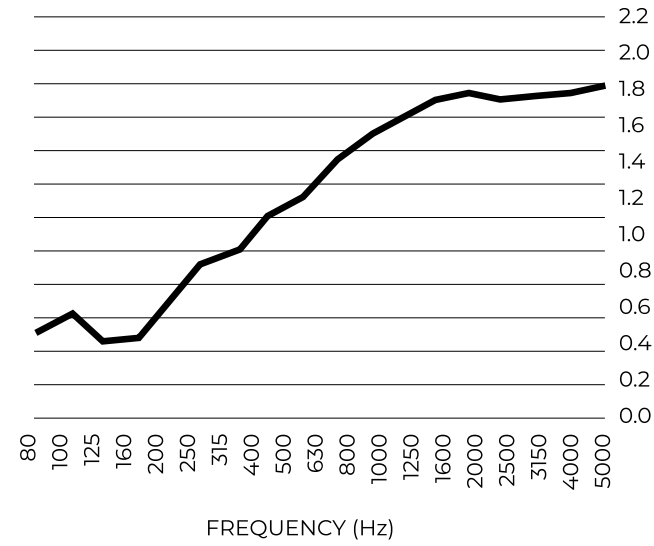
					
CG06 - CHARCOAL GRAY DS18 - SUNNY DAYS	CV36 - GRAPE VINE BR34 - BRICK RED	CV36 - GRAPE VINE PI14 - POLAR ICE CW04 - CLASSIC WHITE	SG14 - SILVER GRAY EG11 - ELEPHANT GRAY	RB08 - ROYAL BLUE PI14 - POLAR ICE	BR34 - BRICK RED TO24 - TIGER ORANGE DS18 - SUNNY DAYS MG10 - MOSS GREEN OB14 - OCEAN BLUE RB08 - ROYAL BLUE CV - GRAPE VINE

NOISE REDUCTION

SOUND ABSORPTION COEFFICIENTS (ASTM C423-17)

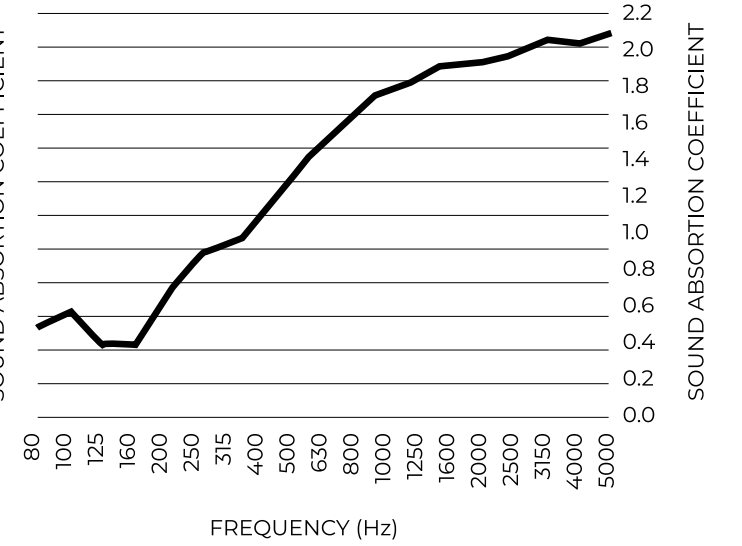
Macaron Acoustic 3.00" (75mm)

NRC	SAA	125	250	500	1000	2000	4000
1.50	1.47	0.70	0.76	1.31	1.81	2.06	2.07



Macaron Acoustic 4.00" (100mm)

NRC	SAA	125	250	500	1000	2000	4000
1.55	1.47	0.80	0.90	1.36	1.91	2.08	2.19



LIGHT SPECIFICATIONS

Ø41" (1050mm)

LIGHT SOURCE TYPE: INTEGRATED LED
 INPUT VOLTAGE: 120V
 BULB VOLTAGE: 120V
 SOCKET TYPE: LED
 TOTAL WATTAGE: 15W
 INITIAL LUMENS: 900lm
 KELVIN: 3000K
 CRI: 80
 DIMMABLE: Yes

LIGHT DIRECTION: Down Adjustable
 LAMP HEAD: No
 LOCATION: DAMP

APPROVAL: 

TITLE 24: yes
 BEAM ANGLE: 120
 CUT HOLE DIAMETER: 6.125"

Ø18" (450mm) / Ø31" (766mm)

LIGHT SOURCE TYPE: INTEGRATED LED
 INPUT VOLTAGE: 120V
 BULB VOLTAGE: 120V
 SOCKET TYPE: LED
 TOTAL WATTAGE: 12W
 INITIAL LUMENS: 700lm
 KELVIN: 3000K
 CRI: 80+
 DIMMABLE: Yes

LIGHT DIRECTION: Down Adjustable
 LAMP HEAD: No
 LOCATION: DAMP

APPROVAL: 

TITLE 24: yes
 BEAM ANGLE: 120
 CUT HOLE DIAMETER: 4.125"

COLORS

COLORS 3/8" (9MM)

				
PURE BLACK PB09	CHARCOAL GRAY CG06	EBONY SLATE ES07	DARK GRAY DG34	SILVER GRAY SG04
				
CLASSIC WHITE CW04	LIGHT BEIGE LB01	DESERT SAND DS10	SUNNY DAYS SD18	TIGER ORANGE TO24
				
RUBY RED RR28	DEEP PURPLE DP30	MIDNIGHT NAVY MN12	POLAR ICE PI14	GREEN APPLE GA41

COLORS 1/2" (12MM)

				
PURE BLACK PB09	CHARCOAL GRAY CG06	BOLD GRAY BG07	ELEPHANT GRAY EG11	SILVER GRAY SG04
				
CLASSIC WHITE CW04	DESERT SAND DS10	TREE BARK TB35	SUNNY DAYS SD18	BRICK RED BR34
				
GRAPE VINE CV36	ROYAL BLUE RB08	POLAR ICE PI14	OCEAN BLUE OB14	MOSS GREEN MG10



ENVIRONMENT

Our Commitment to the Environment

There are approximately 50 billion water bottles consumed around the world each year, and only about half of those get recycled. The rest end up in landfills, littered through our neighborhoods, or floating in our oceans.

Bottled water consumption has more than doubled since 2000; in 2015 there was the equivalent of more than 5 bottles of water consumed for every person in the USA every single week. This, of course, means that the amount of oil required to produce the energy used for the water bottling process continues to grow.

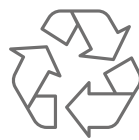
In 2007, the last year global statistics of oil consumption were available, between 32 million and 54 million barrels of oil were used to produce the bottled water that was consumed in the USA alone. This energy is used to make the bottles from PET pellets (1 million tons in the USA), treat water, bottle the water, label the bottles, and transport the bottled water. Most of the energy consumption occurs in the creation of the bottles themselves. To help in the lifecycle of this plastic product, we have chosen to manufacture our material so that it recycles these PET bottles. We are doing our part to reduce the waste. This acoustical and tackable material is made from PET bottles in a zero-waste process with postindustrial recycling. An environmentally friendly, sustainable, and waste reduced alternative to traditional acoustical/tackable material that looks great in any office, education, or open space installation.

ezoBord is



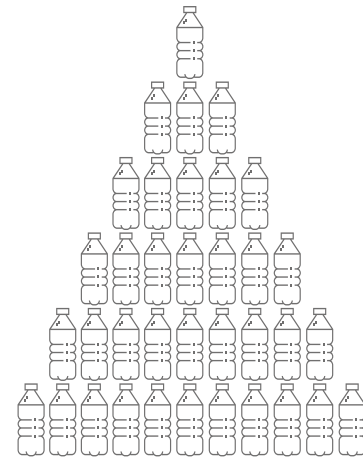
- low VOC
- formaldehyde free

DID YOU KNOW...



For every pound of recycled PET bottles (approximately 23) energy use is reduced by 84% and greenhouse gas emissions are reduced by 71%.

± 166 PET BOTTLES



are used to make one 9mm thick ezoBord sheet





DESIGN
DRIVEN
ACOUSTICS

CANADA

Ayrsonics Inc - Ontario

825 Trillium Drive
Kitchener, Ontario N2R 1J9
844-441-1122
sales@ayrsonics.com

Ayrsonics Inc - Alberta

292236 Nose Creek Boulevard
Building 1B, Unit #19
Rocky View County, AB T4A 3N7
844-441-1122
sales@ayrsonics.com

EzoBord Corporate Office

6845 Rexwood Road, Unit 7
Mississauga, ON L4V 1S5
416-665-3571
info@ezobord.com

UNITED STATES

Ayrsonics Midwest LLC

820 Tollgate Road
Elgin, IL 60123
800-517-0686
sales.amw@ayrsonicsusa.com

Ayrsonics Southwest LLC

8934 Eton Ave
Canoga Park, CA 91304
213-833-9700
sales.asw@ayrsonicsusa.com

Ayrsonics Southeast LLC

15 Enterprise Way
Dahlonega, GA 30533
706-539-4711
sales.ase@ayrsonicsusa.com

UNITED KINGDOM

EzoBord UK Limited

Unit 20, Westwood Business Park
Margate, Kent. CT9 4JJ
+44 1843-264027
sales@ezobord.co.uk

IRELAND

EzoBord Ireland Limited

Inniscarra, Main Street,
Rathcoole, Co. Dublin,
D24 EO29, Ireland
+353 1485-4774
sales@ezobord.ie

CENTRAL & LATIN AMERICA

EzoBord Costa Rica SRL

100 Sur 25 Oeste Recope
Bodega #16 Ochomogo, Cartago
+506 8842-4613
info-ebcr@ezobord.com

EzoBord - LATAM

Buenos Aires, Argentina
+54 9 11 5657-1793
info-latam@ezobord.com

FOLLOW US    