



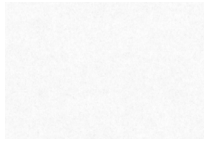
**EZO**  
B O R D

**COLOR PROGRAM**  
2025

EzoBord Acoustic PET Panels

# Premium Collection

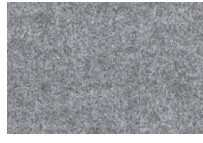
6 mm thickness



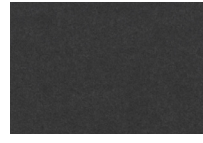
**Classic White**  
CW04-D



**Light Gray**  
LG58-D



**Silver Gray**  
SG04-D



**Charcoal Gray**  
CG06-D



**Pure Black**  
PB09-D



**Light Beige**  
LB01-D



**Camel**  
CA60-D



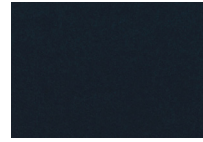
**Eucalyptus**  
EU22-D



**Steel Blue**  
SB32-D



**Denim**  
DE36-D



**Midnight Navy**  
MNI2-D

## Specifications

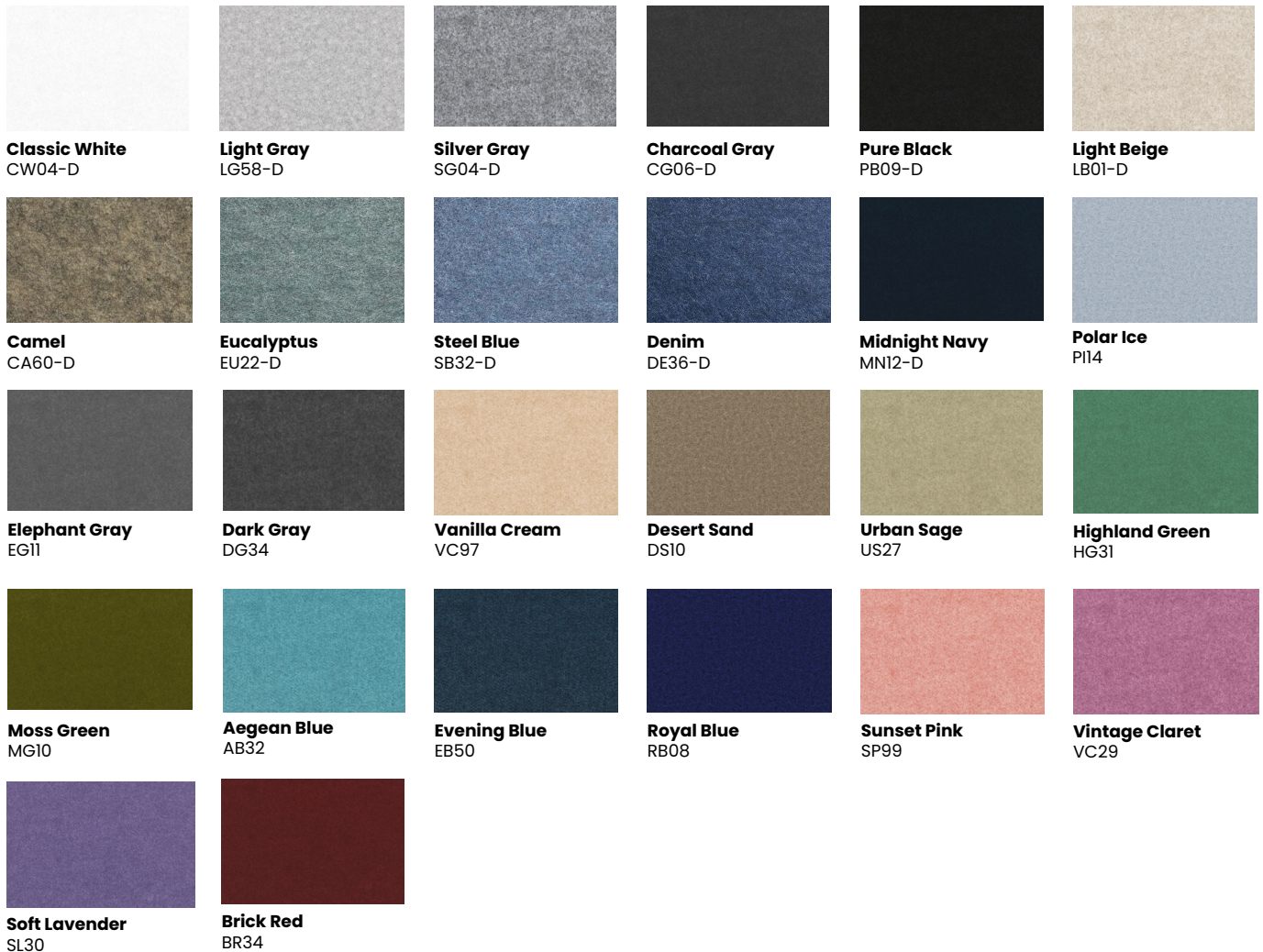


<b>THICKNESS</b>	1/4" (6mm)
<b>WEIGHT</b>	6.3 lbs. (2.85 kg)
<b>DIMENSIONS</b>	Width 48" (1219mm) Length 108" (2743mm)
<b>COMPOSITION</b>	100% polyester (PET) fiber
<b>ACOUSTICS</b>	NRC 0.20 to 0.60 <i>(subject to mounting conditions)</i>

<b>ENVIRONMENT</b>	Min 50% +/- recycled PET 100% recyclable Formaldehyde free Low VOC and CDPH compliant Declare Label - Red List Free
<b>FIRE TESTING</b>	ASTM E-84 Class A CAN/ULC-S102 EN 13501-1: 2007

# Premium Collection

9 mm thickness



## Specifications

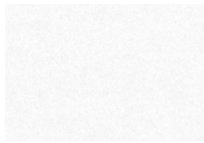


<b>THICKNESS</b>	3/8" (9mm)
<b>WEIGHT</b>	8.5 lbs (3.85 kg)
<b>DIMENSIONS</b>	Width 48" (1219mm) Length 96" (2438mm)
<b>COMPOSITION</b>	100% polyester (PET) fiber
<b>ACOUSTICS</b>	NRC 0.30 to 0.75 <i>(subject to mounting conditions)</i>

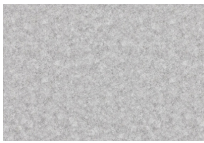
<b>ENVIRONMENT</b>	Min 50% +/- recycled PET 100% recyclable Formaldehyde free Low VOC and CDPH compliant Declare Label - Red List Free
<b>FIRE TESTING</b>	ASTM E-84 Class A CAN/ULC-S102 EN 13501-1: 2007

# Premium Collection

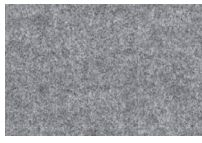
12 mm thickness



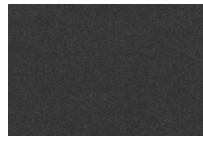
**Classic White**  
CW04-D



**Light Gray**  
LG58-D



**Silver Gray**  
SG04-D



**Charcoal Gray**  
CG06-D



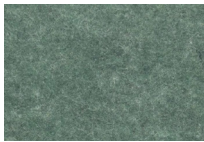
**Pure Black**  
PB09-D



**Light Beige**  
LB01-D



**Camel**  
CA60-D



**Eucalyptus**  
EU22-D



**Steel Blue**  
SB32-D



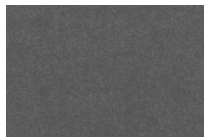
**Denim**  
DE36-D



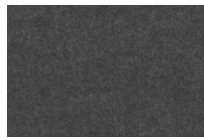
**Midnight Navy**  
MN12-D



**Polar Ice**  
PI14



**Elephant Gray**  
EG11



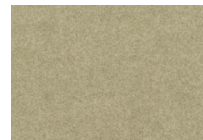
**Dark Gray**  
DG34



**Vanilla Cream**  
VC97



**Desert Sand**  
DS10



**Urban Sage**  
US27



**Highland Green**  
HG31



**Moss Green**  
MG10



**Aegean Blue**  
AB32



**Evening Blue**  
EB50



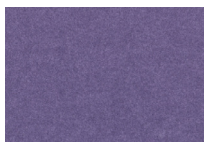
**Royal Blue**  
RB08



**Sunset Pink**  
SP99



**Vintage Claret**  
VC29



**Soft Lavender**  
SL30



**Brick Red**  
BR34

## Specifications



Declare.



<b>THICKNESS</b>	1/2" (12mm)
<b>WEIGHT</b>	16 lbs (7.25 kg)
<b>DIMENSIONS</b>	Width 48" (1219mm) Length 108" (2743mm)
<b>COMPOSITION</b>	100% polyester (PET) fiber
<b>ACOUSTICS</b>	NRC 0.40 to 0.85 (subject to mounting conditions)

<b>ENVIRONMENT</b>	Min 50% +/- recycled PET 100% recyclable Formaldehyde free Low VOC and CDPH compliant Declare Label - Red List Free
--------------------	---

<b>FIRE TESTING</b>	ASTM E-84 Class A* CAN/ULC-S102 EN 13501-1: 2007
---------------------	--

\*Upon request, 1/2" (12mm) sheet material is treated with USA origin post-production flame retardant to Class A surface burning characteristics. Post sheet production FR treatment does not contain any Red List Restricted Chemicals and complies with California Proposition 65.

# Enroute Collection

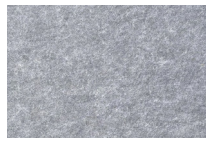
9 mm thickness



**Clay**  
CL12



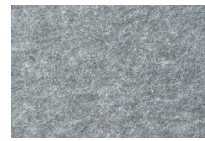
**Stone**  
ST94



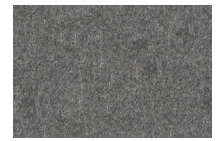
**Seagull**  
SE50-D



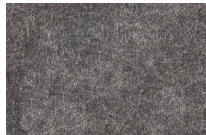
**Khaki**  
KH58-D



**Pewter**  
PE55-D



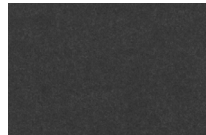
**Shadow**  
SH11



**Graphite**  
GR10



**Bold Gray**  
BG07



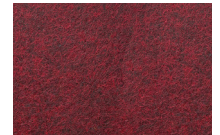
**Ebony Slate**  
ES07



**Grape Vine**  
GV36



**Deep Purple**  
DP30



**Rosewood**  
RO28



**Ruby Red**  
RR28



**Tiger Orange**  
TO24



**Amber Yellow**  
AY27



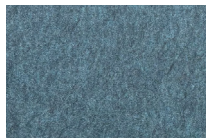
**Sunny Days**  
SD18



**Mustard**  
MU54



**Green Apple**  
GA41



**Cobalt**  
CO26

Enroute colors may have extended lead times or limited availability. Contact your EzoBord sales representative for details.

## Specifications



<b>THICKNESS</b>	3/8" (9mm)
<b>WEIGHT</b>	8.5 lbs (3.85 kg)
<b>DIMENSIONS</b>	Width 48" (1219mm) Length 96" (2438mm)
<b>COMPOSITION</b>	100% polyester (PET) fiber
<b>ACOUSTICS</b>	NRC 0.30 to 0.75 <i>(subject to mounting conditions)</i>

<b>ENVIRONMENT</b>	Min 50% +/- recycled PET 100% recyclable Formaldehyde free Low VOC and CDPH compliant Declare Label - Red List Free
<b>FIRE TESTING</b>	ASTM E-84 Class A CAN/ULC-S102 EN 13501-1: 2007

# Enroute Collection

12 mm thickness



**Clay**  
CL12



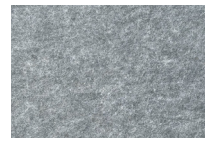
**Stone**  
ST94



**Seagull**  
SE50-D



**Khaki**  
KH58-D



**Pewter**  
PE55-D



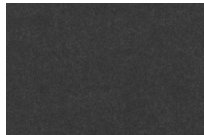
**Shadow**  
SH11



**Graphite**  
GR10



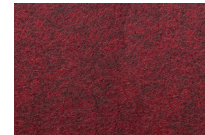
**Bold Gray**  
BG07



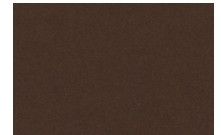
**Ebony Slate**  
ES07



**Grape Vine**  
GV36



**Rosewood**  
RO28



**Tree Bark**  
TB35



**Mustard**  
MU54



**Green Apple**  
GA41



**Sunny Days**  
SD18



**Tiger Orange**  
TO24

Enroute colors may have extended lead times or limited availability. Contact your EzoBord sales representative for details.

## Specifications



<b>THICKNESS</b>	1/2" (12mm)
<b>WEIGHT</b>	16 lbs (7.25 kg)
<b>DIMENSIONS</b>	Width 48" (1219mm) Length 108" (2743mm)
<b>COMPOSITION</b>	100% polyester (PET) fiber
<b>ACOUSTICS</b>	NRC 0.40 to 0.85 (subject to mounting conditions)

<b>ENVIRONMENT</b>	Min 50% +/- recycled PET 100% recyclable Formaldehyde free Low VOC and CDPH compliant Declare Label - Red List Free
--------------------	---

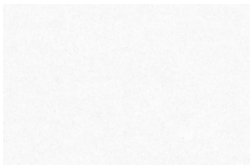
<b>FIRE TESTING</b>	ASTM E-84 Class A* CAN/ULC-S102 EN 13501-1: 2007
---------------------	--

\*Upon request, 1/2" (12mm) sheet material is treated with USA origin post-production flame retardant to Class A surface burning characteristics. Post sheet production FR treatment does not contain any Red List Restricted Chemicals and complies with California Proposition 65.

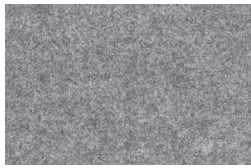
# EzoCore

## Acoustic PET Panels

---



Classic White



Silver Gray

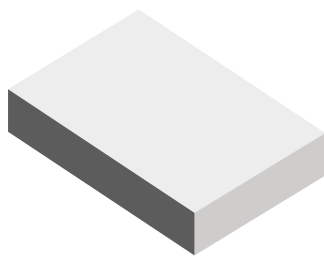


Charcoal Gray

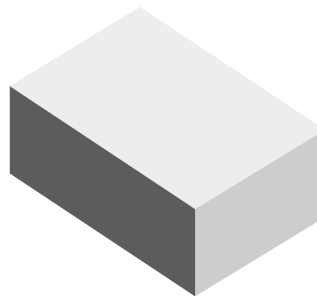


Pure Black

### THICKNESS OPTIONS



1" (25mm)  
NRC .80 to 1.20



2" (50mm)  
NRC 1.10 to 1.55

## Specifications



**THICKNESS** 1" (25mm)  
2" (50mm)

**DIMENSIONS** Width 48" (1219mm)  
Length 108" (2743mm)

**COMPOSITION** 100% polyester (PET) fiber

**ACOUSTICS** 1" (25mm): NRC 0.80 to 1.20  
2" (50mm): NRC 1.10 to 1.55  
(subject to mounting conditions)

**ENVIRONMENT** Min 50% +/- recycled PET  
100% recyclable  
Formaldehyde free  
Low VOC and CDPH compliant  
Declare Label - Red List Free

**FIRE TESTING** ASTM E-84 Class A\*  
CAN/ULC-S102  
EN 13501-1: 2007

\*Upon request, EzoCore sheets are treated with USA origin post-production flame retardant to Class A surface burning characteristics. Post sheet production FR treatment does not contain any Red List Restricted Chemicals and complies with California Proposition 65.

# EzoFelt

## Grade 2



**Solar**  
2-522



**Magma**  
2-528



**Kiss**  
2-532



**Tangerine**  
2-426



**Enoki**  
2-513



**Edelweiss**  
2-565



**Silk**  
2-530



**Dawn**  
2-552



**Technica**  
2-584



**Ink**  
2-555



**Arctic**  
2-551



**Porcelain**  
2-400



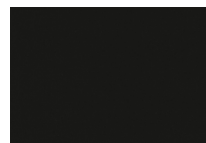
**Sage**  
2-567



**Forest**  
2-448

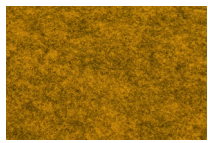


**Slate**  
2-494

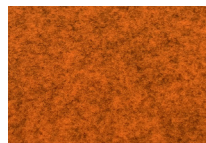


**Pure Black**  
2-499

## Grade 2 Melange



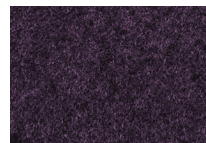
**Honey**  
2-424ML



**Autumn**  
2-426ML



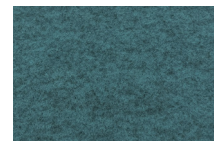
**Merlot**  
2-438ML



**Nightshade**  
2-583ML



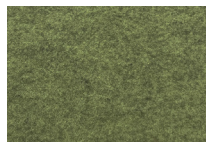
**Ocean**  
2-560ML



**Spruce**  
2-562ML



**Pistachio**  
2-423ML



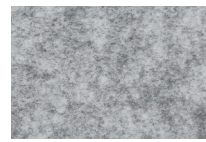
**Bog**  
2-568ML



**Greige**  
2-409ML



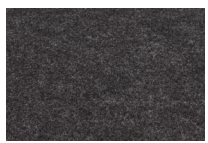
**Flint**  
2-408ML



**Silver**  
2-400ML



**Rhino**  
2-494ML



**Charcoal**  
2-496ML

## Specifications

**THICKNESS** 1/16" (1.75mm)

**WEIGHT** 200 g/m<sup>2</sup> approx

**WIDTH** 78" (2000mm)

**COMPOSITION** 100% polyester fiber

**COLOR FASTNESS TO LIGHT** EN ISO 105-B02 = 6 - 7

**ABRASION RESISTANCE** ISO12947-2 /ac>50.000 RUBS

**ENVIRONMENT** Min 50% +/- recycled PET  
100% recyclable  
Formaldehyde free  
Low VOC and CDPH compliant

**FIRE TESTING** ASTM E-84 Class A  
CAN/ULC-S102  
EN 13501-1: 2007





# EZO B O R D

**EZOPRINT**

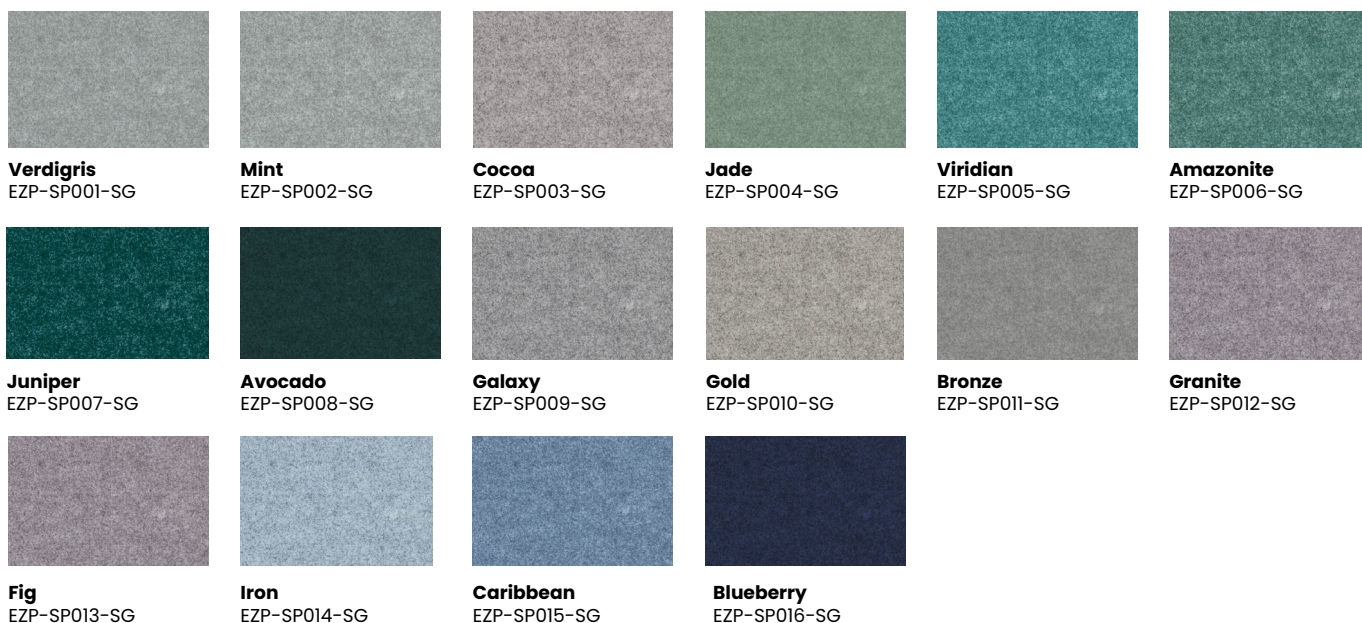
**2025**

# Spectrum Collection



Solid colors printed over Classic White

## Melange



Solid colors printed over Silver Gray

## Color Matching



Our color experts can assist with matching a print color to your requirements. Simply send us your CMYK color preference and/or other material finishes.

## Woodgrain finishes

---



**Driftwood**  
EZP-WGP-DW01



**Marmar Maple**  
EZP-WGP-MM04



**Birch Sand**  
EZP-WGP-BS10



**Yellow Oak**  
EZP-WGP-YO09



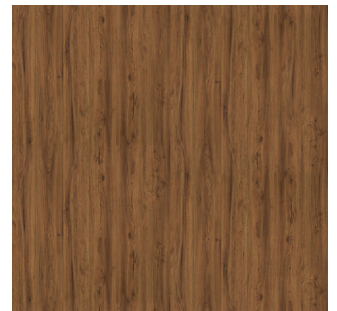
**Grey Oak**  
EZP-WGP-GO08



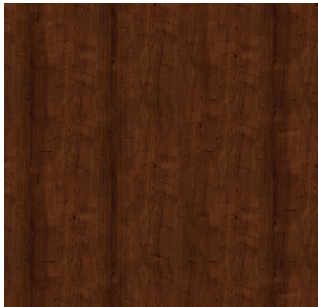
**Cherry Mate**  
EZP-WGP-CM03



**Ash**  
EZP-WGP-AS06



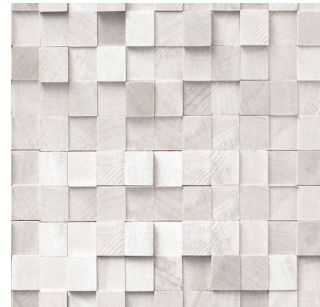
**Walnut**  
EZP-WGP-WA01



**Wenge**  
EZP-WGP-WE02



**Dark Oak**  
EZP-WGP-DO07



ROBIN SPRONG COLLECTION  
**3D Wood Block**  
Franco Moz  
FMZ502051



ROBIN SPRONG COLLECTION  
**Time Will Tell**  
Franco Moz  
KHA 42413

## Brick and Stone

---



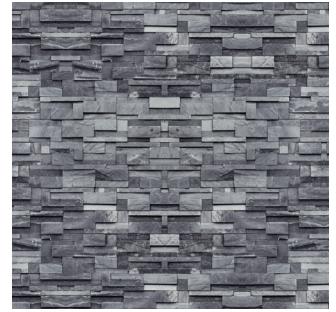
**Ledge 1**  
EZP-BAS-SL01



**Ledge 2**  
EZP-BAS-SL02



**Slate Brick**  
EZP-BAS-SB01



**Small Slate Stone**  
EZP-BAS-SB02

## Concrete

---



ROBIN SPRONG COLLECTION  
**BETON GREY**  
Tharien Smith  
TSM266007



ROBIN SPRONG COLLECTION  
**BETON NATURAL**  
Tharien Smith  
TSM266008



ROBIN SPRONG COLLECTION  
**FRESCO NATURAL**  
Tharien Smith  
TSM266010



ROBIN SPRONG COLLECTION  
**TERRENO GREY**  
Tharien Smith  
TSM266011



ROBIN SPRONG COLLECTION  
**TERRENO RUST**  
Tharien Smith  
TSM266013



ROBIN SPRONG COLLECTION  
**CLIFFORD**  
Tharien Smith  
TSM266077



ROBIN SPRONG COLLECTION  
**ST JAMES NATURAL**  
Tharien Smith  
TSM266084



ROBIN SPRONG COLLECTION  
**WEMBLY NATURAL**  
Tharien Smith  
TSM266089

# Robin Sprong Collection by Artist

over 100 prints available



**DONNA SOLOVEI**  
**Smoke in the Bay**  
DSO10354



**ESTÉ MACLEOD**  
**Aqua**  
EML305004



**FRANCO MOZ**  
**Botanical Lush**  
RSW502022



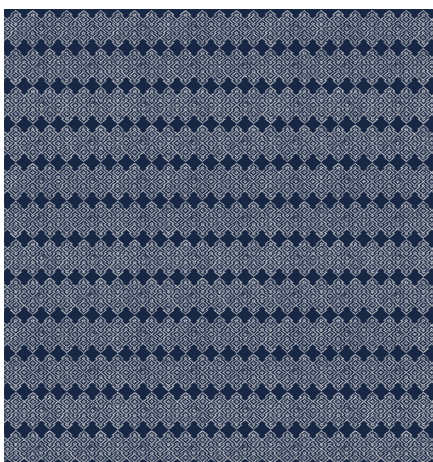
**PATRICIA BRAUNE**  
**Lucky Fish Indigo**  
PBR21584



**ROBYN VALERIE**  
**Climbing Dahlia Grey Yellow**  
RVA13205



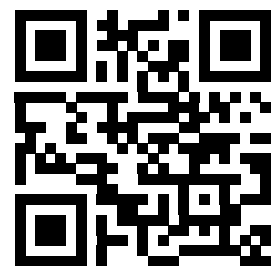
**UTA NAUMANN**  
**Parrots with orchids and hibiscus  
in jungle - Pink Grey**  
UNA239012



**NOVELLA**  
**Maya Stripe White**  
MAD10930



**LOUISE HUNT**  
**Kuba Cloth Cream on Chocolate**  
LHU12839



SEE COMPLETE  
ROBIN SPRONG COLLECTION

**CANADA**

---

**Ayrsonics Inc - Ontario**

825 Trillium Drive  
Kitchener, Ontario N2R 1J9  
844-441-1122  
sales@ayrsonics.com

**Ayrsonics Inc - Alberta**

292236 Nose Creek Boulevard  
Building 1B, Unit #19  
Rocky View County, AB T4A 3N7  
844-441-1122  
sales@ayrsonics.com

**EzoBord Corporate Office**

6845 Rexwood Road, Unit 7  
Mississauga, ON L4V 1S5  
416-665-3571  
info@ezobord.com

**UNITED STATES**

---

**Ayrsonics Midwest LLC**

820 Tollgate Road  
Elgin, IL 60123  
800-517-0686  
sales.amw@ayrsonicsusa.com

**Ayrsonics Southwest LLC**

13430 N Dysart Rd. Suite 120  
Surprise, AZ 85379  
213-833-9700  
sales.asw@ayrsonicsusa.com

**Ayrsonics Southeast LLC**

15 Enterprise Way  
Dahlonega, GA 30533  
706-539-4711  
sales.ase@ayrsonicsusa.com

**UNITED KINGDOM**

---

**EzoBord UK Limited**

Unit 20, Westwood Business Park  
Margate, Kent. CT9 4JJ  
+44 1843-264027  
sales@ezobord.co.uk

**IRELAND**

---

**EzoBord Ireland Limited**

Inniscarra, Main Street,  
Rathcoole, Co. Dublin,  
D24 EO29, Ireland  
+353 1485-4774  
sales@ezobord.ie

**CENTRAL & LATIN AMERICA**

---

**EzoBord Costa Rica SRL**

100 Sur 25 Oeste Recope  
Bodega #16 Ochomogo, Cartago  
+506 8842-4613  
info-ebcr@ezobord.com

**EzoBord - LATAM**

Buenos Aires, Argentina  
+54 9 11 5657-1793  
info-latam@ezobord.com